



Invisible Service Technicians, LLC

200 Ford Circle, Suite G
Milford, OH 45150
P: 513.248.0900
F: 513.248.2470
www.istmonitor.com

IST Serial Interface: Instructions & Setup



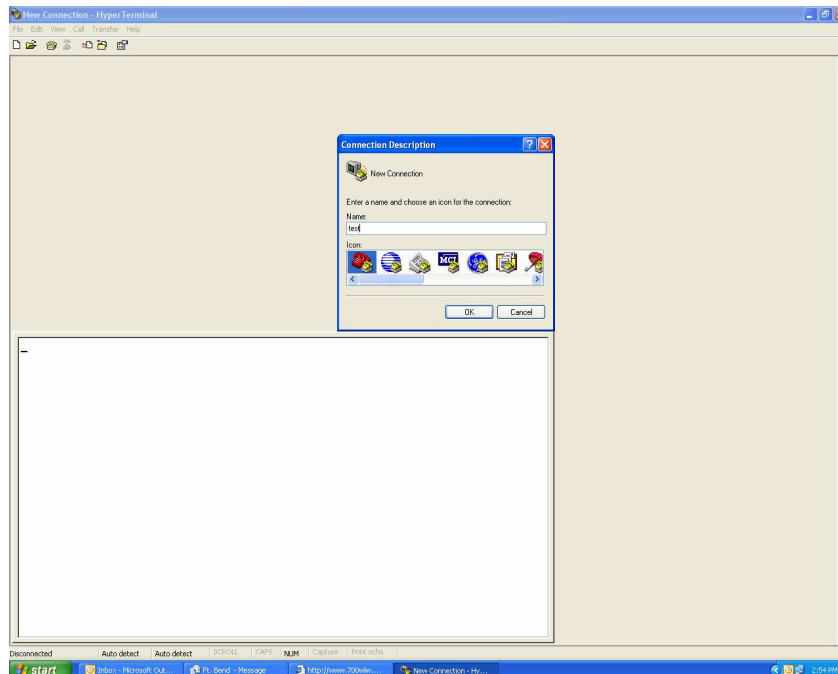
Connect to J3 pins at top right of IST Monitor with White wire on the left.

Connect to the Com Port / Serial Port on your PC. If no serial port, Contact IST for USB Converter

Open Hyper Terminal or other Terminal Program:

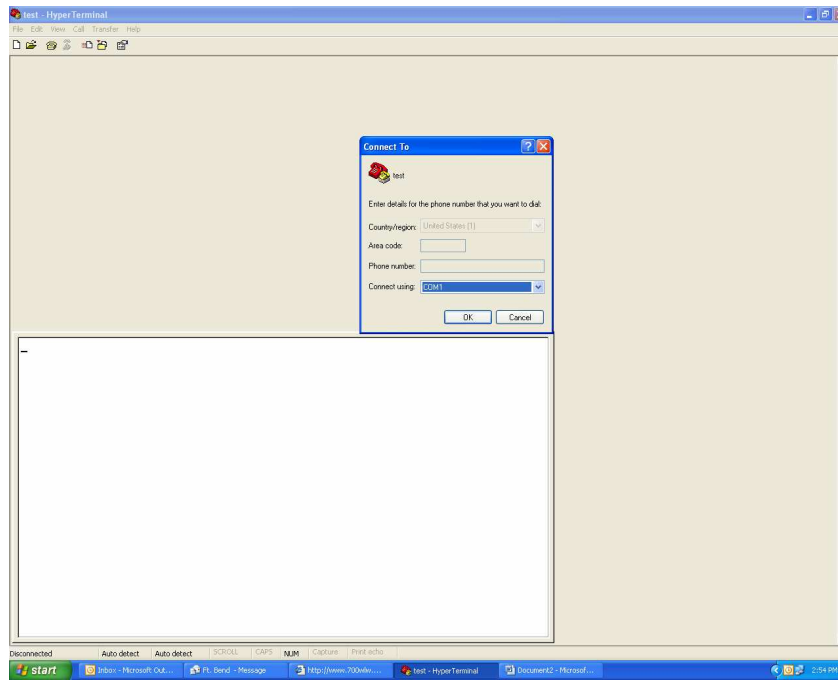
- Select: *Start*
- Accessories
- Communication
- Hyper Terminal

Connection Properties: Enter Name-User Defined
Click OK



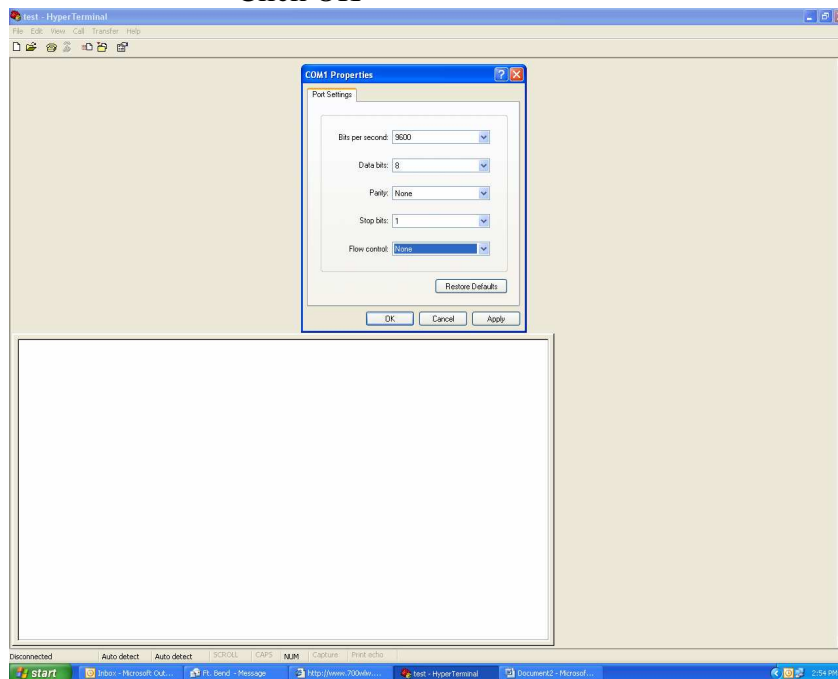
Connect To: Connect Using- Select COM 1

Click OK

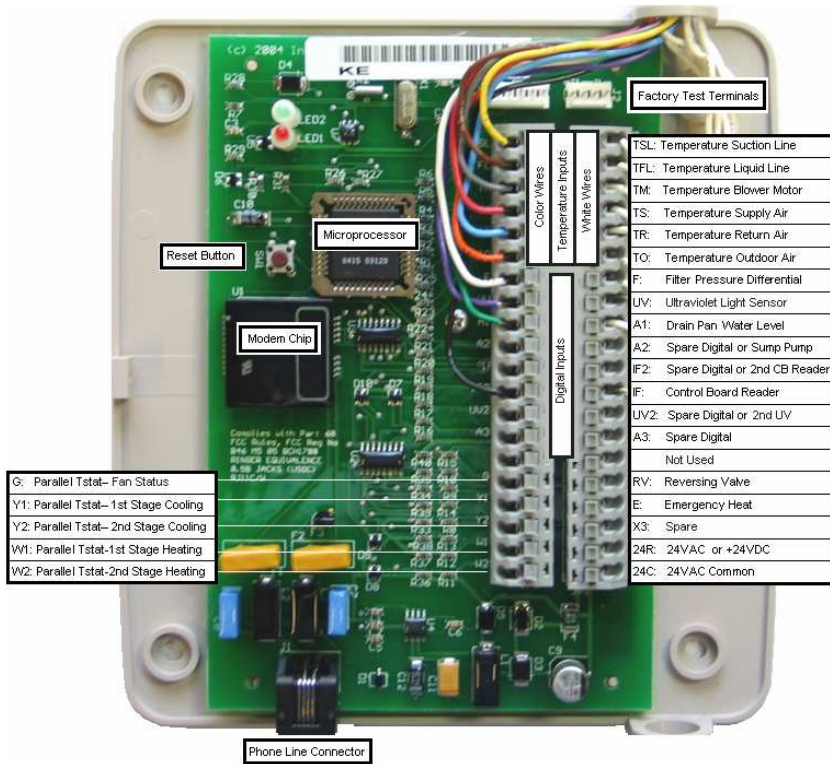


COM1 Properties: Bit per second: 9600
Data Bits: 8
Parity: None
Stop Bits: 1
Flow Control: None

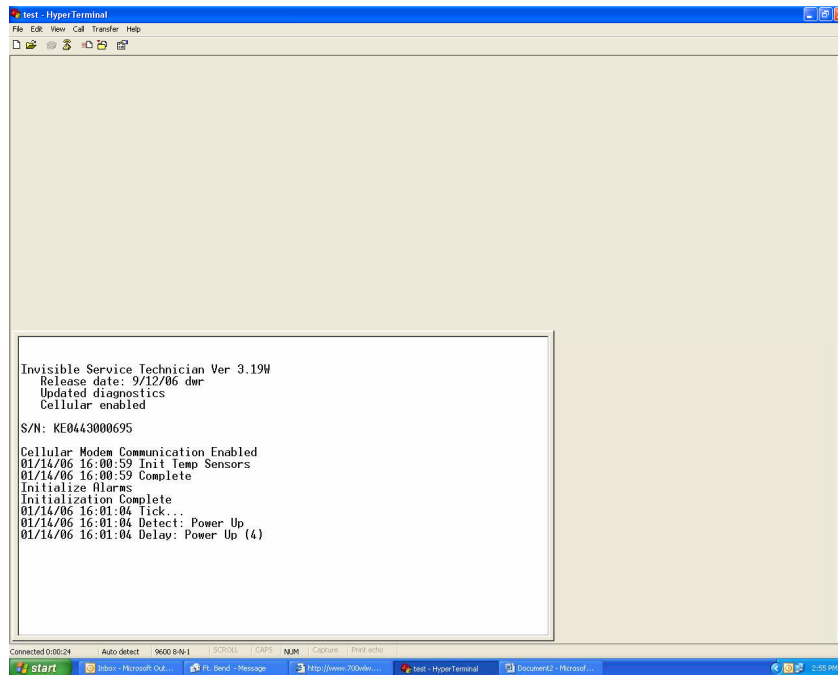
Click Apply
Click OK



Connect Power to IST Monitor: JP1-24R & 24C



The following will appear:



To Display Temperature Sensors:

To Display Terms & Digital Sensors:

To Display Firmware Version & Phone number monitor calls:

To Display Control Commands:

To Display Accumulator Minutes & Cycle Counts:

** Functions are Case Sensitive:*

T
D
V
?
A